



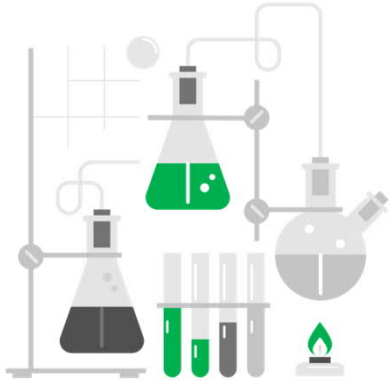
What has made us strong in the analog world,  
makes us even stronger in the digital world.  
We pioneer motion


## Material Compliance – Topics – 11/2021

Aim of this information is to draw awareness at all our suppliers on the topic Material Compliance in general

We pioneer motion

## REACH / RoHS



 For general questions regarding REACH/RoHS, please contact Schaeffler via this special email address:

[REACH-RoHS@schaeffler.com](mailto:REACH-RoHS@schaeffler.com)



For the latest news and updates, please follow the official channels:

- REACH : <https://echa.europa.eu/>
- RoHS: <https://eur-lex.europa.eu/legal-content/EN/TXT/?uri=CELEX%3A02011L0065-20210401>



In case of no information from your side we will consider that the declarations of compliance previous received, are still valid.

## Conflict Minerals



Mica and Cobalt are considered to be additional „Conflict Minerals“ according to [RMI](#).

For general questions regarding Conflict Minerals, please contact Schaeffler via this special email address: [ConflictMinerals@schaeffler.com](mailto:ConflictMinerals@schaeffler.com)



Cobalt is used in batteries part of electric automobiles, mobile phones and laptop computers. Multiple reports have highlighted concerns over social and environmental impacts of cobalt extraction, including child labor and unsafe working conditions in artisanal cobalt mining.

Mica is used for insulation and heat resistance and can be found in some components of electronic and automotive products. Reports in recent years have highlighted instances of child labor, illegal operations and unsafe health and safety conditions in mica production and processing.



Due to this, The Schaeffler Group has the aspiration to itself and its suppliers that all Schaeffler products are free of conflict minerals, sourced from entities, which directly or indirectly finance conflicts in the DRC, or surrounding countries and from mining operations in conflict-affected and high-risk areas.



For any questions related IMDS reporting please feel free to contact our specialists at [IMDS@schaeffler.com](mailto:IMDS@schaeffler.com)

On request, a declaration in other formats such as CAMDS (= Chinese Automotive Material Data System) may also be required.

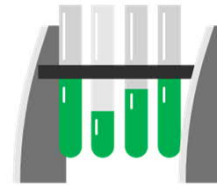


Schaeffler takes this opportunity to remind its suppliers of their duties in terms of updating IMDS information without being requested, as soon as GADSL and/or legal aspects are changed, and the deliveries are affected.



Initial series sample inspections will not be approved without an accepted IMDS entry, therefore the IMDS data must comply with the Schaeffler IMDS acceptance criteria listed in Appendix B of [S132030-1 Prohibited and declarable substances](#).

## Substance restrictions



Substance regulations around the world are expanding very fast. Dates for the restriction/expiration of substances are published within legislations ahead of time.



As research for replacement can be time consuming, suppliers are expected to declare the presence of any substance that is going to be prohibited as soon as the expiration date is published.



Examples for legislations that publish expiring substances are REACH regulations around the globe, the US TSCA, regulations for national implementation of the Stockholm Convention etc.. Please find a list (that is non-exhaustive) within Schaeffler Standard S132030-1 as well.

## Actual Points



### Endocrine disruptors in the supply chain

The regulation of endocrine disruptors in products is progressing in the EU.



The RECh Regulation (EC) No. 1907/2006 requires suppliers to provide information on endocrine disruptors in products, if they are listed as hazardous substances. We therefore call on you as a supplier to fulfill your obligations to inform towards Schaeffler.



In addition to the EU, national authorities such as France with [Law No. 2020-105](#), also specify specific information requirements for endocrine disruptors. The following link lists the substances that have been identified so far as endocrine disruptors at EU level or are still to be assessed:  
<https://edlists.org/the-ed-lists>

## Material Compliance Contact Information



For general questions related to Material Compliance topics, please contact us at [MaterialCompliance@schaeffler.com](mailto:MaterialCompliance@schaeffler.com)

For specific topics, please contact us on the dedicated mailboxes:

RECh/RoHS - [RECh-RoHS@schaeffler.com](mailto:RECh-RoHS@schaeffler.com)

IMDS – [IMDS@schaeffler.com](mailto:IMDS@schaeffler.com)

Conflict Minerals – [ConflictMinerals@schaeffler.com](mailto:ConflictMinerals@schaeffler.com)

We pioneer motion